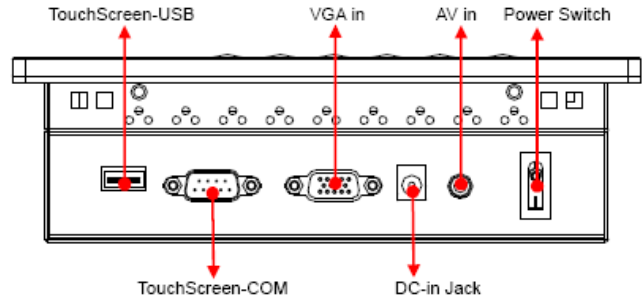
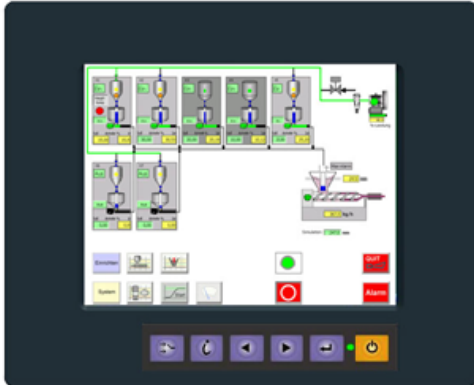


Model: IDPMB-06
6.5" Industrial Panel Monitor



Main Feature

- 6.5" VGA TFT LCD Panel support 640×480 pixels
- 6mm Aluminum front bezel with strengthen glass
- Rugged construction design
- Input signal : VGA + Audio
- Build in 2 x 2 Watts stereo speaker
- OSD control keys to optimize the display
- NEMA4 / IP 65 compliant front panel
- AC 100-240V wide range external AC adapter
- Panel mounting with clip
- Meet standard VESA hole (75x75mm), support desktop stand/wall mount /swing arm mounting

Specification	
Product Model	IDPMB-06T
LCD Panel	Display Type : 6.5" VGA TFT LCD Resolution : 640×480 Max. color : 262K Luminance : 500 cd/m2 View Angel : 140°(H) , 120°(V) Pixel Pitch : 0.069 x 0.207 mm Contrast Ratio : 450 : 1 Response Time : 26 ms Power Consumption : 4.5W LED backlight lifecycle : 50,000hrs
Signal Input	VGA (15 pin D-sub connector) + audio input (audio jack)
Protect Glass	3 mm strengthen glass
Speaker	Built-in 2x stereo speakers(2watt)
OSD	Brightness, Contrast, H/V Position, Color, Phase, Clock, auto tune and recall
Signal Connectivity (optional)	AV input (S-Video, RCA)

DC Power Input (optional)	Wide range DC 7V-28V input
Power Supply	Input: 100~240VAC,50/60Hz Output: DC12V@ 4A /48W ,external ac adapter
Construction	Heavy duty steel and aluminum front panel
Environment	Operating temperature: 0 °C to 50 °C Storage temperature: -20 °C to 60 °C Storage humidity: 10% to 95%, non-condensing Vibration: 17 to 500HZ 1G PTP Shock: 1G /peak(11m sec)
Safety	CE/FCC/Rohs
Dimension W x H x D (mm)	Dimensions: 201x165x59 mm
Weight	NET weight: 2.3KG; Gross weight: 4.1KG

Ordering Information

IDPMB-06	6.5" Industrial Panel Monitor
Optional: DC	Support DC input (7-28VDC)
Optional: AV	Support AV Input (S-Video, RCA)

Structure Diagram

Unit: mm

