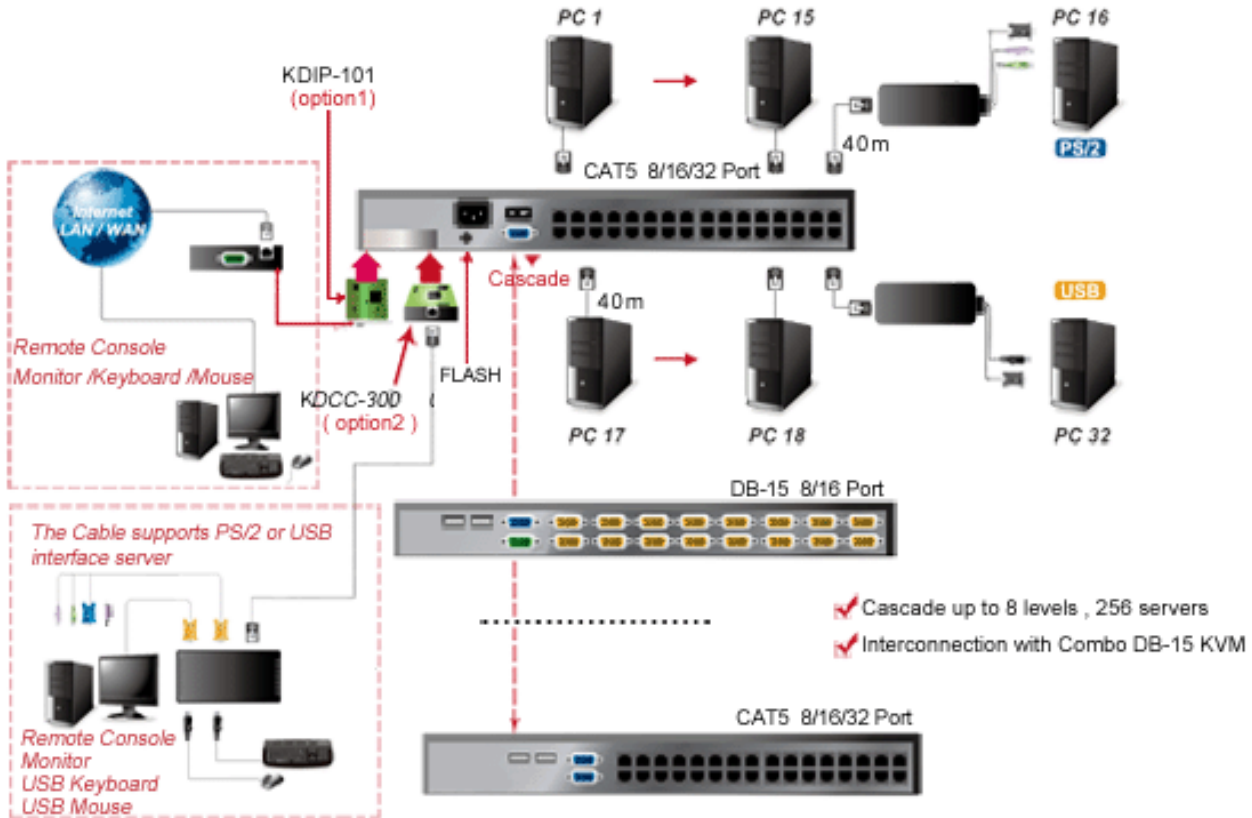


Model: KVM-1708COMBO-N
1U Rackmount 17" TFT LCD ,with 8 port CAT5 Combo LCD KVM



Main Feature

- Build-in Combo CAT5 KVM with either 8 ports
- Support an optional remote console (Cat5 based or Over-IP)
- 104 keys keyboard with touchpad.

- VGA-USB / VGA-PS2 connector dongle up to 40 meters (132 feet) Cat5 cable
- Cascade switches up to 8 levels and Mix switches between Cat5 & DB-15 KVM
- Support DOS, Windows, Netware, Unix, Linux, Mac OS.
- Hot Pluggable - Add or remove connected PCs without having to power down the KVM switch or PCs.
- Superior video quality - Up To 1280 X 1024 , DDC2B
- No software required - easy PC selection via Push Buttons, Hot Keys or OSD (on screen display).
- Auto Scan Mode for monitoring PCs
- Firmware upgradeable for staying compatible with new coming computers
- Metal case, rack mountable Support DDC2B for all ports

Specification		
Product Model	KVM-1708COMBO-N	
LCD	Size	17" TFT
	Resolution	1280 x 1024
	Max. color	16.7M
	Luminance	300 cd/m2
	View Angle	178°(H) , 178°(V)
	Pixel Pitch	0.264 x 0.264 mm
	Contrast Ratio	1000 : 1
LEDs / Port	8	
Power	1	
Computer Connections	8	
Maximum Computer Connections	232	
Computer Connectors	RJ-45 Connector	
Console Ports	1 (One Local), plus 1 Optional Modules : Selectable CAT5-Based or IP Remote Console	
CAT5-Based Remote Console (Optional)	1 x RJ-45 connector up to 300 Meters (1000 feet) with CAT5 cable; Remote receiver support 1 x VGA (up to 1280 x 1024 resolution), 2 x USB for KB & Mouse , 1 x KVM port for connecting an extra PC	
IP-Based Remote Console Module (Optional)	1 x RJ-45 connector for 10/100M Ethernet (remote console up to 1600 x 1200 resolution), 1 x DB-9 male connector for Modem , Null Modem and serial power control , 1 x mini USB 2.0 receptacle	
Daisy Chaining	Daisy Chainable up to 8 levels ; Connector : DB-15 (female type)	
Computer Selection	On Screen Display (OSD) , Hot Key , Push Button	
Hotkey	Provide various Hotkey (Scroll-Lock/ Cap-Lock / Num-Lock / Alt-Ctrl-Win)	
Auto-Scan Intervals	5 - 99 Sec.	
Keyboard / mouse Emulation	PS/2	
Video Resolution (Local Console)	1024 x 768 for 15" , 1280 x 1024 for 17" and 19"	
Video Resolution (Remote Console)	1600 x 1200 for CAT5-Based 500 feet remote console; 1024 x 768 for CAT5-Based 1000 feet remote console; 1600 x 1200 for IP-Based remote console	
Power Adapter	AC 100-240V , 50/60Hz , DC 12V / 4A , 48w via IEC type cord	
Housing	Metal	

Size	19" Rack mount, 1U	
Environment	Operating Temperature	0 - 50°C
	Store Temperature	-20 -60°C
	Humidity	10% to 90%, non-condensing
Net / Gross Weight (KG)	16kg / 21kg	
Physical Dimensions (W x H x D)	448 x 42 x 580 mm	
Packing Dimensions (W x H x D)	580 x 200 x 790 mm	
Certificated	CE/FCC	
Ordering Information		
KVM-1708COMBO-N	1U Rackmount 17" TFT LCD ,with 8 port CAT5 Combo LCD KVM	
KUD (optional)	USB CAT5 KVM Dongle	
KPD (optional)	PS2 CAT5 KVM Dongle	
KDDC-300T & KDDC-300R (optional)	CAT5-Based Remote Transmit & Receive Module - for 300 meter	
KDIP-101 (optional)	IP-Based Remote Console Module	

Structure Diagram Unit :mm

