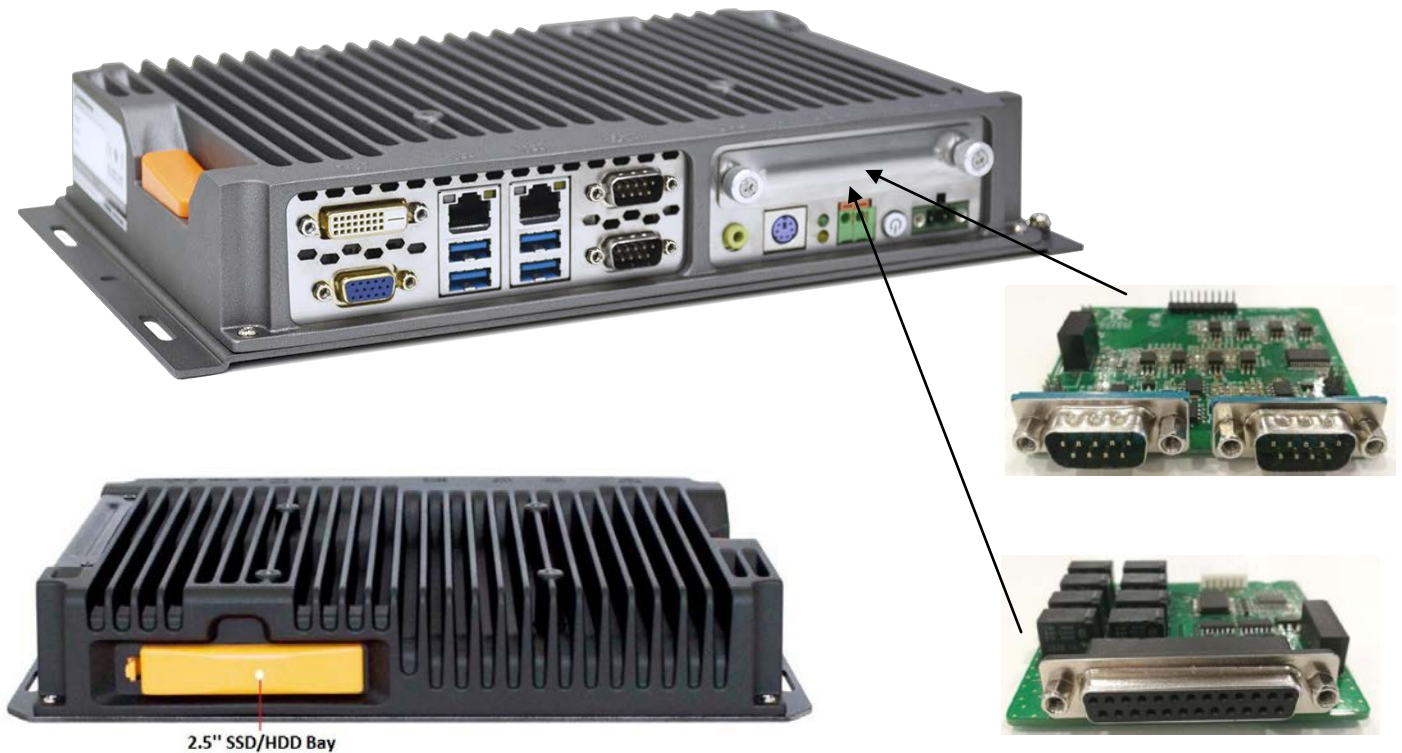


Model: MPCX-67-3855U / MPCX-67-5300U / MPCX-67-5500U / MPCX-67-6200U
Intel 5/6th Generation Core™ i3/i5/i7 Modular Fanless Box PC



Application:

Video Processing, Factory Automation, Processor Automation, Intelligent Traffic Control, Marine / Offshore Industrial ...

Specification	
Processor	Intel 5/6th Gen Intel® Core™ U-series (i3/i5/i7)
Chipset	Intel® integrated with processor
Memory	1 x DDR3L SO-DIMM Socket up to 16GB
Storage	1 x 2.5" SSD/HDD drive bay, 1 x mSATA (full size)
Audio	Realtek ALC662 6 channel HD Audio, Line-Out
LAN	2 x Intel® i210-IT GbE LAN
USB port	4 x USB 3.0/2.0
Graphic	Intel® HD Graphics 510/520, Max. resolution @ 1920 x 1200, with VGA + DVI output
Expansive interface	2 x Mini PCI-E (full size, with SIM Holder) Optional (Expansion card): 4 x RS 232/485 Optional (Expansion card): 16 x DIO (Isolated, 8 Input & 8 Relay Output)
I/O port	2 x RJ45, 4 x USB 3.0/2.0, 1 x VGA, 1 x DVI, 1 x Lin-out, 2 x RS232/485, 1 x Power Switch, 1 x PS2 (KB & Mouse), DC input terminal (12-24VDC)
Construction	Heavy duty steel and Aluminum (Fanless Design)
Watch-Dog Timer	1 - 255 second programmable
Environment	Operating temperature: -20 °C to 60 °C Storage temperature: -40 °C to 80 °C

	Storage humidity: 10% to 90% non-condensing Vibration operate SSD: 3 Grms, IEC 60068-2-64, random, 5-500 Hz, 1 hr/axis Shock operate SSD: 30 G, IEC 60068-2-27, half sine, 11 ms duration
Safety Certification	CE, FCC, ROHS
Dimension W x H x D (mm)	297 x 184 x 50
Ordering Information	
MPCX-67-3855U	Intel 5/6th Generation Core™ i3/i5/i7 Modular Fanless Box PC, with Intel® Celeron® Processor 3855U Processor (Dual Core, 1.6GHz, 2M Cache)
MPCX-67-5300U	Intel 5/6th Generation Core™ i3/i5/i7 Modular Fanless Box PC, with Intel® Core™ i5 5300U Processor (Dual Core, 2.3 to 2.9GHz, 3M Cache)
MPCX-67-5500U	Intel 5/6th Generation Core™ i3/i5/i7 Modular Fanless Box PC, with Intel® Core™ i7 5500U Processor (Dual Core, 2.4 to 3.0GHz, 4M Cache)
MPCX-67-6200U	Intel 5/6th Generation Core™ i3/i5/i7 Modular Fanless Box PC, with Intel® Core™ i5 6200U Processor (Dual Core, 2.3 to 2.8GHz, 3M Cache)
Optional - eCOM4	4 x RS 232/485 Expansion card
Optional - eDIO16	64GB 16 x DIO (Isolated, 8 Input & 8 Relay Output)Expansion card
Optional - AC to DC Adapter	12VDC/60watt Power Adapter, input 110-240VAC
Optional - RAM	4 to 16GB DDRIII SO-DIMM RAM
Optional - SSD / HDD	64GB to 2TB 2.5''SSD, 500GB to 2TB 2.5'' SATA HDD
Optional - OS	DOS, Windows 7 / 8.1 / 10 Professional, Linux

Structure Diagram

