

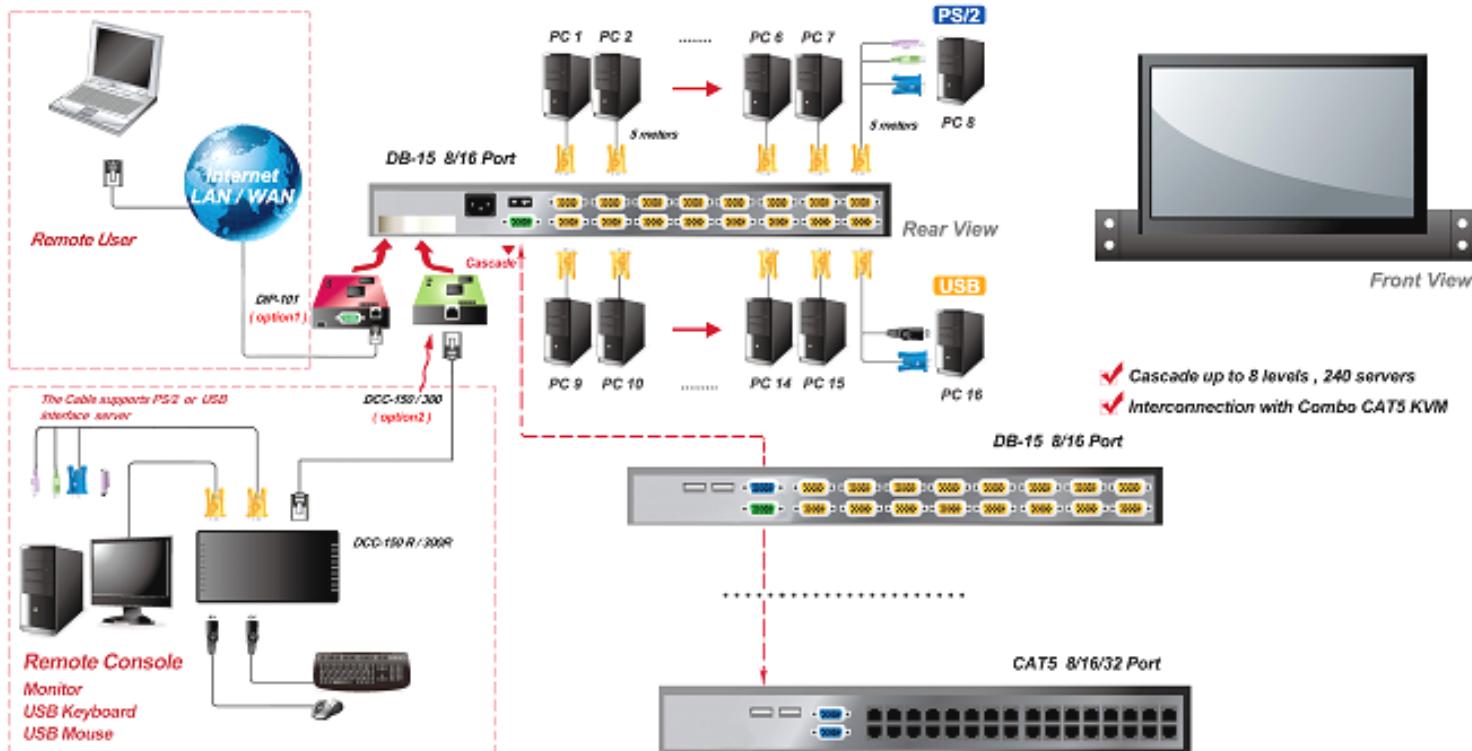
**Model:** KVM-08xxCOMBO (KVM-0808COMBO, KVM-0816COMBO)  
**1U Rackmount 8" TFT LCD KVM**

**Main Feature**

- Support one optional remote console ( CAT6 based or over IP )
- Integrated 8" LCD panel with 80 keys keyboard and touch pad
- compliant with 19" rack cabinet, 1U height
- Cascade switches up to 8 levels , support mixed CAT6 & DB-15 KVM switches
- Mix PS2 , USB , SUM & MAC with Multi-Platform switch capability
- Auto scan mode for monitoring PCs, easy select via push buttons
- hot keys and OSD
- Superior video quality - up to 1024x768, support DDC2B for all KVM port
- Hot pluggable, no software or driver required
- Firmware upgradeable



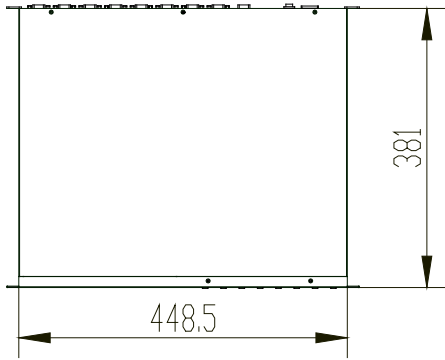
**Diagram**



Specification			
Product Model		KVM-0808COMBO	KVM-0816COMBO
LCD	Size	8" TFT	8" TFT
	Resolution	1024 x 768	1024 x 768
	Contrast	700	700
	Brightness	250	250
	Max. Color	26.2k	26.2k
	View Angle	75/75,75/75	75/75,75/75
	Contrast Ratio	700	700
LEDs / Port		8	16
Computer Connections		8	16
Maximum Computer Connections		232	240
Computer connections		DB-15 Female Combo connector .	
Console ports		Plus one optional modules : selectable CAT6 based or IP remote consoles	
CAT6 based remote console ( DCC-101 )		1 x RJ45 connector up to 300 meters ( 1000 feet ) with CAT6 cable ; remote receiver support 1 x VGA ( up to 1024 x 768 resolution ) , 2 x USB for KB & Mouse, 1 x KVM port for connecting an extra PC	
IP based remote console ( DIP-101 )		1 x RJ45 connector for 10/100M Ethernet ( up to 1600 x 1200 resolution ); 1 x DB-9 male connector for Modem , Null Modem and Serial power control , 1 x mini USB 2.0 receptacle	
Daisy Chaining		1 x DB-15 (female) , up to 8 levels	
Computer selection		On screen display ( OSD) , Hot keys , Push Buttons	
Hot Keys		Provide various hot key ( Scroll-Lock, Caps-Lock, Num-Lock, Alt-Ctrl-Win )	
Video Resolution ( Remote console )		1280x1024 for CAT6-based 500 feet remote console , 1024x768 for CAT6-based 1,000 feet remote console , 1600x1200 for IP-based remote console	
Power Adapter		AC 100-240V , 50/60 Hz , DC 12V / 4A , 48W , via IEC Type Cord	
Housing		Metal Case	
Housing		19" Rack Mount , 1U	
Net / Gross Weight		6.5kg / 9.5kg	
Physical Dimension (W x H x D)		482 x 43.6 x 381mm	
Operating Temperature		0 ~ 50 °C	
Storage Temperature		-20 ~ 60 °C	
Humidity		90%, Non-Condensing	
Certificated		CE / FCC	
Ordering Information			
KVM-0808COMBO		1U Rackmount 8" TFT LCD ,with 8 port KVM switch, with 48 W power supply	
KVM-0816COMBO		1U Rackmount 8" TFT LCD ,with 16 port KVM switch, with 48 W power supply	

**Structure Diagram** Unit : mm

TOP VIEW



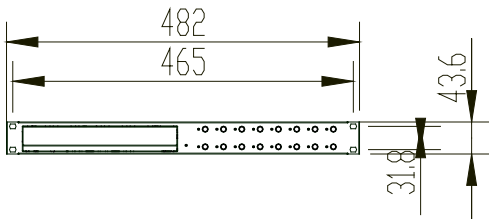
LEFT VIEW



RIGHT VIEW



FRONT VIEW



BACK VIEW

